



**AUSTIN  
FILM  
SOCIETY**

# AUSTIN PUBLIC



AUSTIN  
FILM  
SOCIETY



## **HOURS:**

Monday – Thursday  
12-10pm

Friday & Sunday  
11am-7pm

Closed Saturdays

## **ADDRESS:**

1143 Northwestern Ave.  
Austin, TX  
78702

# AFS PROGRAMS @ AUSTIN PUBLIC



## PUBLIC ACCESS:

- Producer Program
  - Ages 15 and up, access to resources and distribution
- Educational tours, summer series, etc.

## CREATIVES CAREERS: (Workforce Development)

- Ages 18 and up
- 3 Pathways

## ARTIST DEVELOPMENT:

- Grants
- Works in Progress Screenings, Artist Intensives, etc.





**PRODUCER  
PROGRAM**

AUSTIN PUBLIC

# HISTORY OF PUBLIC ACCESS TV



AUSTIN  
FILM  
SOCIETY

## IT ALL STARTED IN 1972...

### MARCH 31, 1972

The FCC issued a new cable TV ruling that required cable providers to provide channel space for Public, Educational and Government use.

### 1972

A student organization at the University of Texas was formed to move Public Access Television from concept to reality in Austin.



# HISTORY OF PUBLIC ACCESS TV



AUSTIN  
FILM  
SOCIETY

## THE POPULARITY OF CABLE TV BEGAN TO SPREAD:

It was felt that the disenfranchised and underserved must have access to the airwaves.

### MARCH 5, 1973

Austin based Capital Cable Company provided channels 10 and 2 to PEG access.

### JUNE 20, 1973

Austin Community Television (ACTV) became a registered Non-Profit.



# HISTORY OF PUBLIC ACCESS TV



AUSTIN  
FILM  
SOCIETY

**1990** - Our current facility opened its doors

**2005** - channelAustin takes wins contract

**2015** - Austin Film Society wins contract

**2016** - The location is renamed **Austin Public**.

**FUN FACT:** Austin Public's channel 10 is the longest running public access channel in the country.



# THE PRODUCER PROGRAM

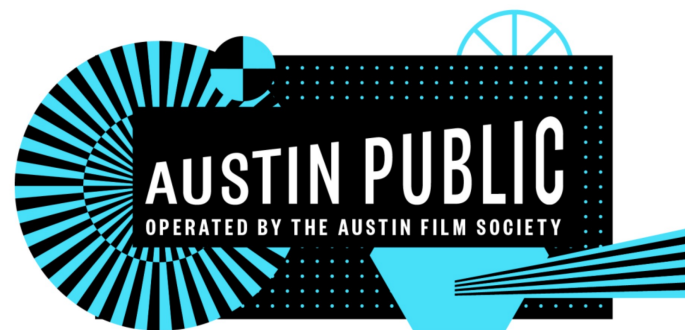


AUSTIN  
FILM  
SOCIETY

## WHAT IS A PRODUCER?

### A PERSON THAT IS...

- ✓ A member of the Producer Program
- ✓ 15 years of age or older
- ✓ Residing within the Austin metropolitan area
- ✓ Certified to use the video production resources at Austin Public, which is optional
- ✓ Sharing at least a portion of the content created with Austin Public's resources onto the Public Access channels and streaming services





# WHAT WE PROVIDE



AUSTIN  
FILM  
SOCIETY

- A community of content Producers
- Networking opportunities
- Production equipment and training:
  - ✓ cameras
  - ✓ microphones
  - ✓ light kits
  - ✓ grip gear
  - ✓ camera rigs
  - ✓ editing computers
- Two TV studios
- Video podcasting studio
- Audio production suite
- Conference room
- Content distribution (cable tv and streaming)
- Live programming (onsite and remote)



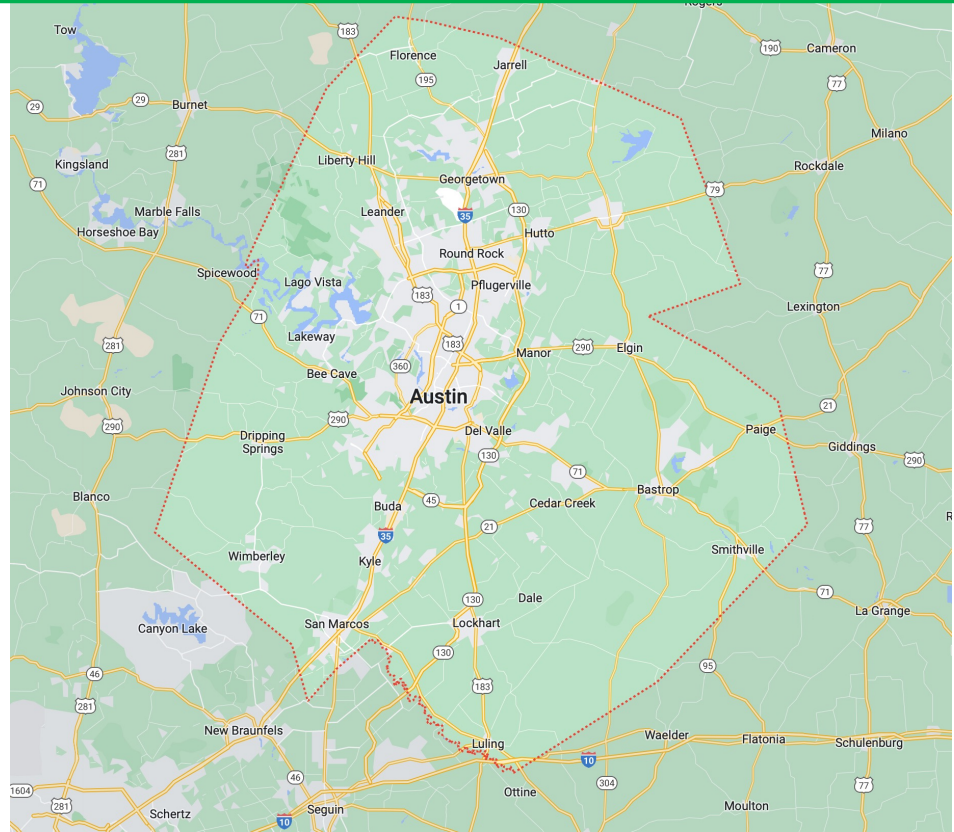
# PROGRAM SERVICE AREA



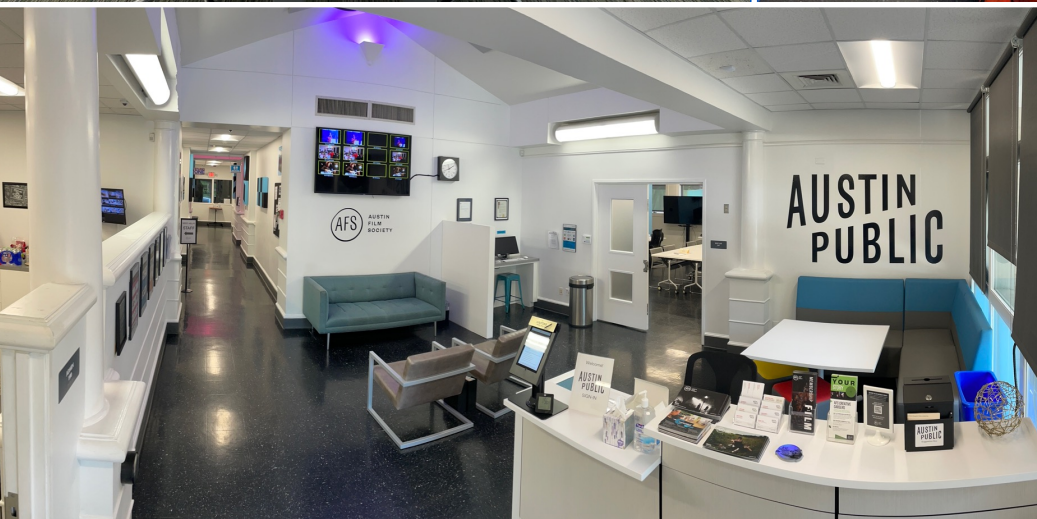
## FOR RESIDENTS WITHIN:

- Travis County
- Williamson County
- Bastrop County
- Hays County
- Caldwell County

(Austin's Metro Area)



# INTERIOR SPACES



# STUDIO 1

1200 sq ft



# STUDIO 2

340 sq ft



# STUDIO 3

Video Podcasting



# AUDIO BOOTH



# HOW TO JOIN THE PROGRAM



AUSTIN  
FILM  
SOCIETY

## 3 STEP START UP PROCESS:

### COMPLETE THE ORIENTATION PROCESS



ORIENTATION

**STEP 1:**

WATCH OUR **ORIENTATION VIDEO** &  
DOWNLOAD **THE HANDOUT**



INTAKE FORM

**STEP 2:**

COMPLETE THE **INTAKE FORM**



MEDIA POLICY

**STEP 3:**

ATTEND A **MEDIA POLICY CLASS**

**You are here!**

# HOW TO JOIN THE PROGRAM



AUSTIN  
FILM  
SOCIETY

## COMPLETE THE ORIENTATION PROCESS



### STEP 1:

WATCH OUR **ORIENTATION VIDEO** &  
DOWNLOAD **THE HANDOUT**



### STEP 2:

COMPLETE THE **INTAKE FORM**



### STEP 3:

ATTEND A **MEDIA POLICY CLASS**

Complete all 3 steps....

You will then...

- Become an active Producer within the program
- Receive your Producer Portal Login
- Have the ability to submit content for distribution
- Have the ability to sign up for Resource Certification classes



# ACCESS TO RESOURCES



AUSTIN  
FILM  
SOCIETY

OPTION 1

**MONTHLY**  
\$12/month

Auto-renews monthly

OR

OPTION 2

**ANNUAL**  
\$120/yr

Auto-renews yearly

OR

OPTION 3

**ANNUAL  
SCHOLARSHIP**

Must qualify financially

Pay subscription  
Fee

STEP 4.

**\*Airing content is free, but you will only have access to content distribution and not gear or studio space. Elect to be a “content only” Producer when filling in the online intake form.**

- Subscription payments auto renew either monthly or yearly
- Monthly subscription can be cancelled anytime , Yearly can be cancelled prior to annual renewal
- Email or call staff to cancel - [austinpublic@austinfilm.org](mailto:austinpublic@austinfilm.org)

# HOW TO JOIN THE PROGRAM



AUSTIN  
FILM  
SOCIETY

Complete Step #4....



You will then receive...

- Access to the conference room
- Access to take-home computers & the edit lab
- Access to the Audio Production Suite
- Access to all other gear and studios you've been certified to use through our training classes

# THE PRODUCER PROGRAM



Complete steps 1 - 3 to join

Complete Resource Certification Class(es)

Subscription payment or scholarship

Checkout Gear  
And/or Studios  
No rental fee

Create  
Content  
you own it

Provide us  
Content  
we distribute it



Tools AFS ONLINE Cine... 8 / 16

## Rokinon (brand) Prime Lenses

50mm 35mm

24mm  
\*35mm  
50mm  
85mm

85mm 24mm

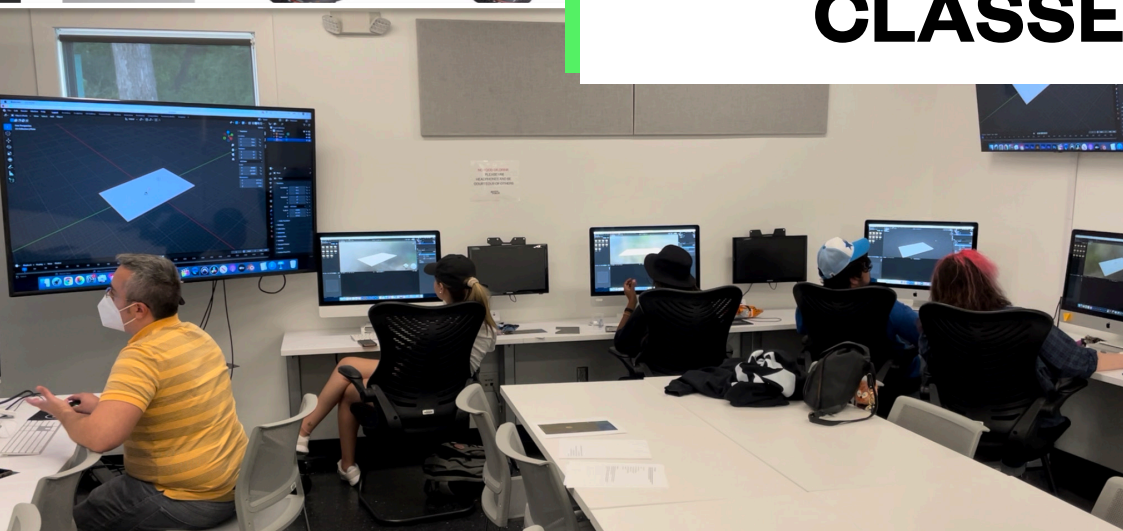
CANON mount

Ángel Granados

- Combine Files
- Organize Pages
- Redact
- Protect
- Compress PDF
- Fill & Sign
- Send for Comme...



# CLASSES





Screenings

Classes & Events

2024 Toast to Texas Film

Texas Film Hall Of Fame

Gift Cards

Calendar

# CLASSES & EVENTS

<p>Fri, Apr 12 5:30 PM - 6:30 PM</p> <h2>AUSTIN PUBLIC STUDIO CREW CERTIFICATION</h2> <p><a href="#">Resource Certification</a></p>	<p>Mon, Apr 15 7:00 PM - 8:00 PM</p> <h2>ORIENTATION FOR THE PRODUCER PROGRAM</h2> <p>Online</p>
<p>Wed, Apr 17 6:00 PM - 8:30 PM</p> <h2>WORKS-IN-PROGRESS: CARNAGE RADIO</h2> <p>In-Person</p>	<p>Wed, Apr 17 6:30 PM - 9:30 PM</p> <h2>BLACKMAGIC DESIGN MULTI-CAMERA PRODUCTION</h2> <p>In-Person</p> <p><a href="#">Resource Certification</a></p>
<p>Thu, Apr 18 5:00 PM - 10:00 PM</p> <h2>STUDIO 1 TRAINING (SPACE ONLY)</h2> <p>In-Person</p> <p><a href="#">Resource Certification</a></p>	<p>Thu, Apr 18 6:00 PM - 10:00 PM</p> <h2>INTERMEDIATE EDITING WITH ADOBE PREMIERE</h2> <p>In-Person</p> <p><a href="#">Continuing Education</a></p>

# INTERMEDIATE CAMERA: SONY FX3

**Register Now**

## Date and Time

Mon, Nov 27

6:30 PM - 9:30 PM

## Price

\$50 AFS Member | \$55 Regular

Price

## Location

Austin Public - Edit Lab

1143 Northwestern Ave, Austin, TX

78702

## REQUIRED KNOWLEDGE

Basic understanding of camera functions (shutter speed, frame rate, ISO, white balance, iris, framing, etc) is necessary.

[Camera Classes](#) [Resource Certification Classes](#)

## RESOURCE CERTIFICATION CLASS

This 3-hour onsite intermediate class provides more in-depth training on the functions of the Sony FX3 digital cinema camera and its menu system as well as hands-on practice time shooting with the camera and overview of the recording file structure and management.

This course certifies Producers in the following equipment to then reserve at no additional cost:

- Sony FX3 Full Frame 4K Cinema Camera body
- Sony 18-105 Zoom E-Mount Kit Lens and prime lenses
- Sachtler Fluid Head Tripod
- 7" monitors

If you prefer to take our basic camera class first then please look for the ["Intro to Sony Cameras: Functions and Fundamentals"](#) class.

# RESOURCE CERTIFICATION CLASSES



AUSTIN  
FILM  
SOCIETY

CLASS NAMES	TYPE OF RESOURCES
<b>Intro to Sony FX Line: Functions &amp; Fundamentals</b>	Cameras, tripods, lenses, monitors
<b>Intermediate Camera (various)</b>	Camera, tripods, lenses, monitors
<b>Blackmagic Multi-Cam Production</b>	Blackmagic multi-camera kits
<b>Intro to Field Audio</b>	Field audio equipment (not including larger mixers)
<b>Intermediate Field Audio</b>	Larger audio mixers and podcasting kits
<b>Intro to Lighting &amp; Grip</b>	All lighting and grip gear
<b>Intro to Rigs &amp; Stabilizers</b>	All rigs and stabilizer gear
<b>Studio 1, 2, 3 / Crew</b>	Access to whichever studio was trained

**These “Resource Certification” classes are required to gain access to that type of gear**

# RESOURCE CERTIFICATION CLASSES



AUSTIN  
FILM  
SOCIETY

## EQUIPMENT CLASSES: To gain access to field production equipment

Producers may complete individual equipment classes based on their production needs

- \$35 - \$65 per class, take only once (discounts for **AFS Members**)
- Single day, 3 – 5 hours total

## STUDIO CLASSES: To gain access to the studios

- **Studio Three:** 3-hour class (Small office-sized podcast space with 3 cameras) - \$55
- **Studio Two:** 4-hour class (Talk show sized 340sq ft. studio with 3 cameras) - \$60
- **Studio One:** 4-hour class ( 1200sq ft. studio with 7 cameras) - \$65
- **Control Room Upgrade** – 10-hour, optional class (2 days) - \$45

\*All resource certification classes are taught at least once a month\*



# CONTINUING EDUCATION CLASSES



AUSTIN  
FILM  
SOCIETY

## PRE-PRODUCTION

- Pre-Production Planning
- Intro to Storytelling

## PRODUCTION

- Field Lighting Techniques
- Cinematography Techniques
- Hands-On Lighting Workshop
- Pro Indie Set Etiquette
- Live Audio Mixing
- Directing 101
- Documentary Filmmaking

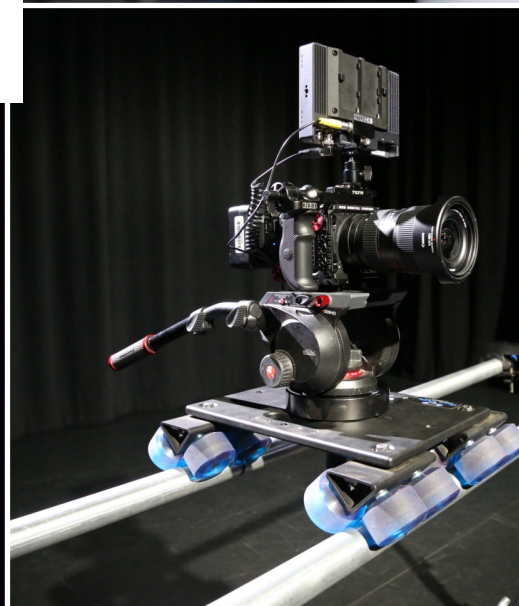
## POST-PRODUCTION

- Pro Tools
- Adobe Premiere
- Adobe After Effects
- Adobe Creative Suite
- Post-Prod. Workflow
- Intermediate Editing
- Blender (3D Animation)
- DaVinci Resolve

**These classes are optional and for professional development. Taught every 2-6 months.**



# EQUIPMENT



# CAMERAS



## Intro Sony FX Line Class

Taught twice a month



SONY FX3 (4K)



SONY FX6 (4K)



SONY FX 9 (4K)

## Intermediate Camera Classes

Rotated each month, 2-3 per month



RED KOMODO (6K)



SONY FX3 (4K)



BLACKMAGIC POCKET  
CAMERA (6K)



SONY FX 9 (4K)



SONY FX6 (4K)

## Multi-Cam Class

Every other month



BLACKMAGIC DESIGN  
PRODUCTION KIT

# CAMERAS



AUSTIN  
FILM  
SOCIETY

## No longer trained

Certification provided with any camera class

---



Sony Z280



Sony A7Sii



Sony FS5



Canon 5D Mark III

# OTHER GEAR & STUDIOS



AUSTIN  
FILM  
SOCIETY

## WHEN AND HOW CAN I RESERVE?

- Within 30 days... but...
- With a 24-hour notice
- Submitted via your Producer Portal

## HOW LONG CAN I RESERVE?

- Field production Equipment: 1-5 days
- Field editing equipment: 1-10 days
- Studios: 1-4 hours
- 48-hours between reservations for same resource



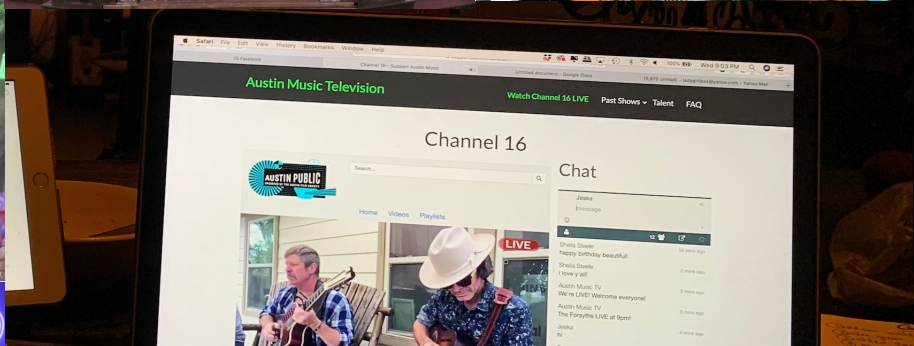
Lighting



Audio



Grip and Rigs



Like Minded Lunatics

# CONTENT



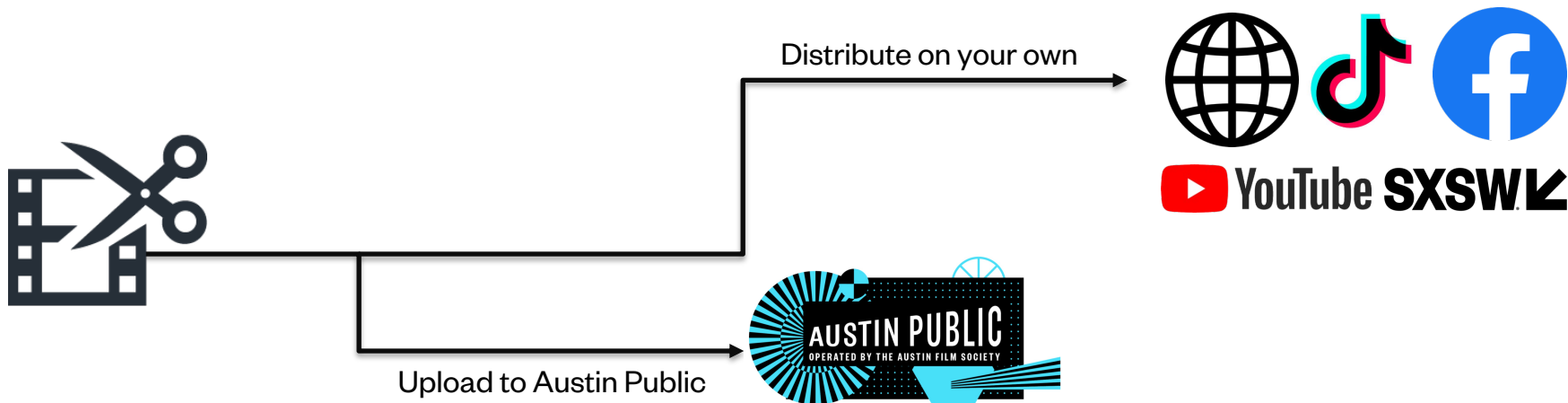
# DISTRIBUTION



AUSTIN  
FILM  
SOCIETY

## Producer Content Policy :

Producers are responsible for submitting content (in its entirety or a portion) created with Austin Public resources to air on Austin Public's distribution platform before distributed through other platforms. **Producer owns all content created with Austin Public resources.**



# DISTRIBUTION OPTIONS



[AUSTINFILM.ORG/AUSTIN-PUBLIC/WATCH](http://AUSTINFILM.ORG/AUSTIN-PUBLIC/WATCH)



ANDROID PHONE APP



STREAMING SERVICES

APPLE IPHONE IOS APP





## TYPES OF CONTENT

### INDEPENDENT SHOWS

- Content of any length
- Programmed at our discretion or a Producer can request an airdate
- No cost

### SERIES

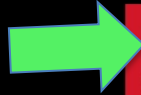
A show that airs on the same day, time and channel for 4 months

- Total run time of 28:30, 58:30, 1:28:30 or 1:58:30
- Price ranges from \$10-\$25 for the 4-month Series
- The three Series Seasons:
  - Summer Season June 1 to September 30
  - Fall & Winter Season October 1 to January 31
  - Spring Season February 1 to May 30

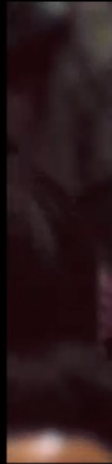
What would you like to share with your community?

## CONTENT EXAMPLES:

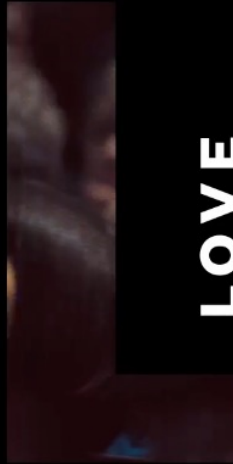
- Creating a feature film and uploading just the trailer
- Streaming or recording a musical performance
- Recording a high school graduation and uploading an edited version
- Streaming or recording a church service
- A live or pre-recorded video podcast
- Creating a TV pilot and editing and uploading a scene
- A live studio comedy or talk show
- Recording a D&D game and editing and uploading the best parts
- A "how to" show (art, workouts, starting a small business, etc.)
- Music Videos



**MAKE**



**WATCH**



**LOVE**



# AUSTIN PUBLIC

[About Austin Public](#)

[Become A Producer](#)

[Austin Public Resources](#)

[Watch Austin Public](#)

[Series Application](#)

[Producer Portal Login](#)

[Training Videos](#)

**FOR INFO ON OUR CURRENT OPERATIONS  
PLEASE GO [HERE](#).**

Please contact [Charles Wright](#) for questions about equipment drop off and live shows/series. Please contact [Elias Posada](#) for questions regarding classes and producer program.

**AUSTIN PUBLIC**



Committed to freedom of speech and expression, Austin Public is a non-exclusive and content-neutral media studio that offers low- and no-cost training, equipment, facilities, and content distribution services to all Austinites. Its programs empower individuals and nonprofit organizations to create film and media projects that speak to the local community, facilitate community building, and diversify the media landscape. Austin Public operates cable channels 10, 11, and 16 (cable channel 10 being the longest continually running public access station in the country) and simultaneously streams the channels. Austin Public also provides video-on-demand and over the top distribution services. Find our streams and video-on-demand content [here](#).



# AUSTIN PUBLIC RESOURCES

Available through our [Filmmaker Program](#) (Click red links for full list of resources)



- [About Austin Public](#)
- [Become A Producer](#)
- [Austin Public Resources](#)
- [Watch Austin Public](#)
- [Series Application](#)
- [Producer Portal Login](#)
- [Training Videos](#)



## CONTENT DISTRIBUTION



## PRODUCTION & MEETING SPACES



## CAMERAS & TRIPODS



## LIGHTING, FLAGS, SCRIMS & BACKDROPS



## AUDIO GEAR



## MULTI-CAM & PODCASTING KITS



Screenings & Events ▾

Community Programs ▾

Filmmaker Support ▾

Join & Give ▾

Rentals & Facilities ▾

About ▾

Tickets

Calendar

Search

Donate

AFS Cinema

Austin Public

Austin Studios

# WATCH AUSTIN PUBLIC



[About Austin Public](#)

[Become A Producer](#)

[Austin Public Resources](#)

[Watch Austin Public](#)

[Series Application](#)

[Producer Portal Login](#)

[Training Videos](#)

AUSTIN PUBLIC 10

AUSTIN PUBLIC 11

AUSTIN PUBLIC 16



AUSTIN PUBLIC 10

AUSTIN PUBLIC 11

AUSTIN PUBLIC 16

Tuesday 08/16/2022

Time	Program	Duration
12:00 AM	Cooking Good: ckgdrarebit002	00:58:44

# HOW TO CONTACT US

- [\(512\) 322-0145](tel:5123220145)
  - Ext. 3241 for Equipment Room
  - Ext. 3235 for General inquiries
- [austinpublic@austinfilm.org](mailto:austinpublic@austinfilm.org) (Coordinator)

